

Sales Effective
Sun. March 17 thru
Sat. March 23, 2024

THE MARKET IN THE SQUARE

FOLLOW US!



FAMILY
PACK



5⁹⁹
PER LB.

Value Cut
**Porterhouse or
T-Bone Steaks**

FAMILY
PACK



1⁹⁹
PER LB.

Fresh 'n Tender,
Bone-In Center Cut
PORK RIB CHOPS or
COUNTRY STYLE RIBS



4⁹⁹
PER LB.

USDA Choice, Boneless
**BEEF EYE OF
ROUND ROAST** or
TOP ROUND ROAST

FAMILY
PACK



79¢
PER LB.

Grade A,
CHICKEN DRUMSTICKS



5⁹⁹
PER LB.

Premium Smith's Whole
**SEMI-BONELESS
HAMS**



2 FOR \$5 Red, Ripe
STRAWBERRIES
1 LB. Package



5⁹⁹ PER LB. Wardynski's
**SMOKED
POLISH SAUSAGE**
Regular or Marjoram



8⁹⁹ MAXWELL HOUSE
COFFEE
24.5 - 30.65 oz.
Several Varieties



5⁹⁹ PEPSI
10 or 12 packs
Several Varieties
7.5 or 12 oz. cans
Plus Deposit



2⁹⁹ STOUTER'S
CLASSIC DISHES
8.87 - 12.87 oz.
Several Varieties



**BUY 1 GET 1
FREE!** Entenmann's
SOFT-EE'S DONUTS
12 packs
Several Varieties

Sign-up Today for



Our Newsletter!

SOUTHWATE PLAZA • 940 UNION RD.
WEST SENeca • 716-675-8200
Hours: Monday - Saturday: 7:00 am - 9:00 pm
Sunday: 7:00 am - 7:00 pm

OR IN YOUR BROWSER AT
TheMarketInTheSquare.com

BUDWEY'S PLAZA • 535 DIVISION ST.
NORTH TONAWANDA • 716-693-2802
Hours: Monday - Saturday: 7:00 am - 9:00 pm
Sunday: 7:00 am - 7:00 pm

GROCERY



3⁹⁹

Doritos or Ruffles
7.25 - 9.25 oz.
Several Varieties



2FOR \$7

Cheez-It
Snack Crackers
5.75 - 12.4 oz. • Several Varieties



2FOR \$7

Best Yet Drinking Water
24 pack • 16.9 oz bottles
Plus Deposit



Polar Seltzers
12 packs
12 oz. cans
Plus deposit

Several Varieties

4⁴⁹



Pillsbury Brownie Mix 18.4 oz.

3FOR \$5



Pillsbury Funfetti Frosting
15 - 15.6 oz.

2FOR \$5

Several Varieties



Nabisco Nilla Wafers or Honey Maid Graham Crackers
11 - 14 oz.

Several Varieties

3⁹⁹



Bumble Bee Chunk Light Tuna or Starkist Tuna Pouches
2.6 - 5 oz.

Several Varieties

4FOR \$5



Post Cereals
13.5 - 20 oz.

3⁹⁹

Several Varieties



Maxwell House K-Cups
12 ct.

Several Varieties

7⁹⁹



Heinz Ketchup
38 oz.

4⁹⁹



Heinz BBQ Sauce
18.6 - 21.4 oz.

2⁹⁹

Several Varieties



Best Yet Mustard
12 oz.

1⁴⁹



Mott's Apple Sauce
6 packs
23.4 - 24 oz.

Several Varieties

2⁹⁹



Best Yet Pineapple
20 oz.

2FOR \$3



Best Yet Flour
5 LB.

1⁹⁹



Wish-Bone Dressings
15 oz.

2FOR \$5

Several Varieties



V-8 Splash
64 oz.

2FOR \$5

Several Varieties



4⁹⁹

Coca Cola
8 packs • 12 oz.
Plus Deposit
Several Varieties



2FOR \$7

Kellogg's Nutri-Grain Bars
10.4 oz.
Several Varieties



2FOR \$7

Keebler Cookies
8.5 - 12.5 oz.
Several Varieties



Vitamin Water
20 oz.
Plus deposit

Several Varieties

3FOR \$4



Several Varieties

Kellogg's Townhouse Crackers
9 - 13.8 oz.

2FOR \$7



Best Yet Gravy
12 oz.

4FOR \$5

Several Varieties



Capri Sun
10 pack
60 oz.

Several Varieties

3⁹⁹



Several Varieties

Barilla Pasta
12 - 16 oz.

2FOR \$3



Hunt's Pasta Sauce
24 oz.

2FOR \$3

Several Varieties



Idahoan Instant Potatoes
4 - 4.1 oz.

Several Varieties

3FOR \$4



Bounty Paper Towels
4 Rolls

9⁹⁹



Charmin Bath Tissue
6 Rolls

8⁹⁹

DAIRY



Upstate Farms Yogurt
8 oz. • Several Varieties

79¢



Cabot Butter Quarters
16 oz. • Salted or Unsalted

4⁴⁹



International Delights Coffee Creamers
32 oz. • Several Varieties

2FOR \$7



Florida's Natural Orange Juice
52 oz. • Several Varieties

2FOR \$7

BUTCHER SHOPPE

FAMILY PACKS!



2⁹⁹
PER LB.

**Ground Fresh Daily!
Ground Beef**
73% Lean



WHOLE
2⁴⁹
PER LB.

HALF
2⁹⁹
PER LB.

**Sugardale
Semi-Boneless
Hams**



8⁹⁹
PER LB.

**Angus Beef! Boneless
Ribeye
Delmonico Steaks**



3⁴⁹
PER LB.

**Bone-In, Center-Cut
Stuffed
Pork Chops**



USDA Choice
Boneless
Beef Chuck
Roast
5⁹⁹
PER LB.



Fresh 'n Tender,
Bone-In
Pork Sirloin
Roast
1⁶⁹
PER LB.



Grade A
Split
Chicken
Breast
1⁹⁹
PER LB.



USDA Choice
Boneless
Beef Stew or
Cube Steaks
6⁹⁹
PER LB.



Thin
Sliced!
Fresh 'n Tender
Pork
Nibblers
3⁹⁹
PER LB.



Dubel's
Polish
Sausage
Reg. or Marjoram
FRESH **5⁹⁹** SMOKED **6⁹⁹**
PER LB. PER LB.



Sahlen's
Tender Casing
Hot Dogs
3 LB. Bag
12⁹⁹



Frozen
Italian
Sausage
Patties
Mild or Hot
3⁹⁹
PER LB.



Jamestown
Sliced Bacon
1 LB.
2⁹⁹



**Sugardale,
Bone-in
Ham Steaks**
3⁹⁹
PER LB.



Frozen, Best Yet
E-Z Peel Large
Raw Shrimp
16 - 20 ct • 1 LB. Bag
7⁹⁹



**Matlaw's
Stuffed Clams Casino
or Stuffed Scallops**
18 - 20 oz.
6⁹⁹



Frozen, Skin-On
Haddock
Fillets
4⁹⁹
PER LB.



Meat Raffle HEADQUARTERS!

Lean on our years of experience to deliver quality meat and exceptional service for your fundraising needs! Order now and receive bonus gift cards as a token of our gratitude!

Stop by the Meat Department for more information

FROZEN



**DiGiorno
Rising Crust Pizzas**
27.5 - 31.5 oz. • Several Varieties

5⁹⁹



**Pillsbury
Toaster Strudels**
11.7 oz. • Several Varieties

**2FOR
\$6**



Smart Ones Entrees
9 - 10 oz. • Several Varieties

**5FOR
\$10**



**Perry's Ice Cream
Novelties**
18 - 24 oz. • Several Varieties

3⁹⁹

BEER



**Coors Light,
Miller Lite or
Molson Canadian**
30 Pack

23⁹⁹
Plus Deposit



**Michelob
Ultra**
24 pack

21⁹⁹
Plus Deposit



**Labatt Blue or
Blue Light**
18 pack

10⁹⁹ Plus Deposit
after \$5 digital rebate
15.99 minus \$5 = 10.99



**Resurgence
Brewing**
4 pack cans

8⁹⁹ Plus Deposit

Digital Rebate Rules Apply. See Store for details.

Customer APPRECIATION DAY

Tuesday
March 19th!

SAVE 5%
ON YOUR TOTAL
PURCHASE OVER \$20*

*Total purchase is prior to sales tax and excludes money orders, lottery, gift cards, postage, bill pay, and alcohol

Nick's Picks

**Special Savings
to Help Your Dollar Go Further!**



**Whole
Rotisserie
Chicken**

6.99

EASY DINNER IDEA!
Hot (when available)
or Heat 'n Eat



**Lay's
Party Size
Potato Chips**

3.49

12.5-13 oz.
Several Varieties



**Sara Lee
Breads**

2.99

20 oz.
Several Varieties



**Best Yet
Ice Cream**

2.99

48 oz.
Several Varieties



**Dutch Farms
Shredded or
Bar Cheese**

3FOR\$5

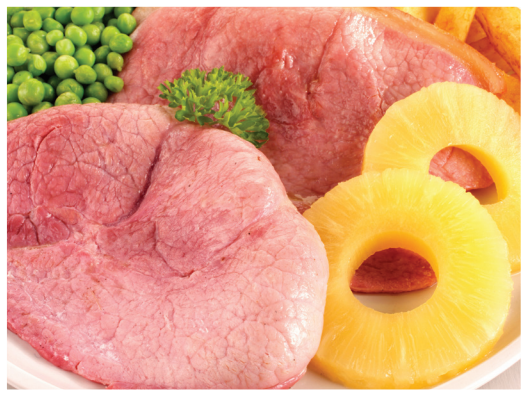
Several Varieties
6 - 8 oz.



**Coca-Cola
6 packs**

**BUY 2 GET 3
FREE!**

Several Varieties
16.9 oz. bottles • Plus Deposit



\$8⁹⁹ EACH **Complete Brown Sugar and Pineapple Ham Dinner**



\$8 EACH **Heat 'n Eat Stuffed Shells Dinner** with 2 sides!



9⁹⁹ PER LB. **Heat 'n Eat Polish Sausage** with Sauerkraut Smoked or Fresh!



STARTING AT **4⁹⁹** PER LB. **Heat 'n Eat Easter Side Dishes**

West Seneca • 940 Union Rd.
716-675-8200

N. Tonawanda • 535 Division St
716-693-2802

PRODUCE



1⁶⁸ PER LB. **Fresh Asparagus**



1⁴⁸ EACH **Fresh Celery**



Sno-White Cauliflower
2⁸⁸ EACH



Golden, Ripe Pineapples
2⁸⁸ EACH



2⁸⁸ PINT **Grape Tomatoes**



2⁸⁸ US #1 **Potatoes**
5 LB. Bag • White, Russet, Red, & Yukon Gold



Tropical Lemons or Limes
2^{FOR} \$1



Sweet Peppers
Red, Orange and Yellow
2⁹⁹ PER LB.

BAKERY

Baked Fresh Daily!



2.99 **Italian Bread**
16 oz. • Save 50¢

Made Fresh!



5.99 **Hot Cross Buns**
6 ct.

Baked in Store!



5.99 **SCONES** 6 ct.
Assorted Varieties • Pre-Packaged

Baked in Store!



3.49 **BUTTERMILK BISCUITS**
6 ct.



3.99 **KAISER ROLLS** 6 ct.
Save 30¢ • Pre-Packaged



6.49 **PEANUT or COCONUT STICK DONUTS** 6 ct. • Pre-Packaged

DELI



6⁹⁹ PER LB. **SAHLEN'S HAM OFF THE BONE or SWISS CHEESE**



6⁹⁹ PER LB. **SEAFOOD SALAD**



8⁹⁹ PER LB. **Babcia's Cherrywood Smoked POLISH SAUSAGE**



Market in the Square or Babcia's PIEROGIES
Farmers Cheese, Kraut, Potato Cheddar, Banana Pepper
7⁹⁹ 6 ct.



Broadway Market FAMOUS HORSERADISH
White or Beet
6⁵⁹ 8 oz.



Easter Colored Deviled Eggs
5⁹⁹ 8 ct.
18⁹⁹ 24 ct.



Fresh Cut! MIXED FRUIT HULA BOWLS
5⁹⁹ PER LB.